


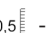



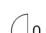
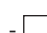



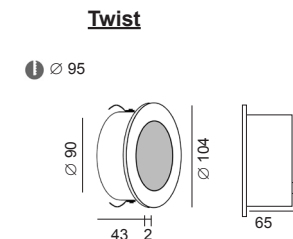
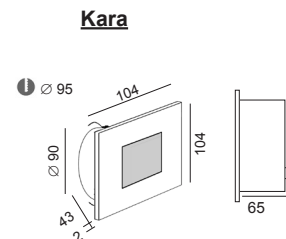


Kara & Twist

last update 24/09/2015

BEL1024

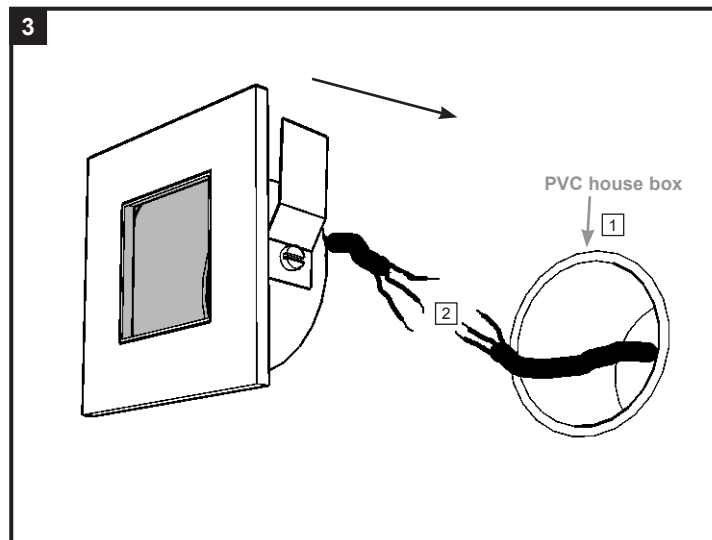
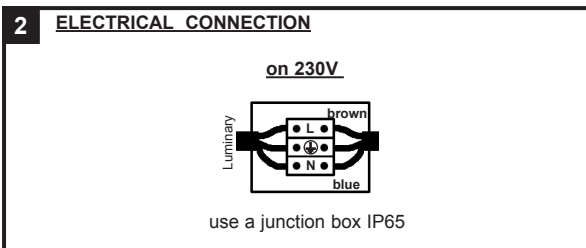
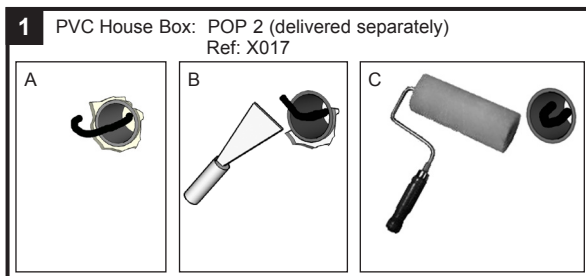
Kara:	code 1103.G9. __	max.40W QT14/G9 - 230V~ - CE - IP65 -  -  - 
Kara:	code 1103.W6. __	LED 6W - 230V~ - CE - IP65 -  -  - 
Twist:	code 1104.G9. __	max.40W QT14/G9 - 230V~ - CE - IP65 -  -  - 
Twist:	code 1104.W6. __	LED 6W - 230V~ - CE - IP65 -  -  - 



BEL LIGHTING sprl
Avenue Ernest Solvay 42
B-1480 Saintes (Tubize)
Belgium
Phone: +32(0)2 3552428
Fax: +32(0)2 3550396
e-mail: info@bel-lighting.com
www.bel-lighting.com

INSTALLATION INSTRUCTIONS - PART A

1. FIT THE PVC HOUSE BOX IN THE WALL
2. MAKE THE ELECTRICAL CONNECTION
3. PLACE THE LUMINARY
4. SWITCH ON



PART

A

Lees de algemene gebruiksvoorwaarden : PART B
Lire attentivement les conditions generales d'utilisation: PART B
Read attentively the general instructions: PART B
Lesen Sie die allgemeinen Gebrauchsanweisungen: PART B
Διαβάστε της γενικές οδηγίες : PART B

WAARSCHUWING
AVERTISSEMENT
WARNING
WARNUNG
ΠΡΟΣΟΧΗ